



Teldat Router Compact Modular Installation Manual

Teldat-Dm 300-I

Copyright© Version 3.2 Teldat S.A.

Legal Notice

Warranty

This publication is subject to change.

Teldat S.A. offers no warranty whatsoever for information contained in this manual.

Teldat S.A. is not liable for any direct, indirect, collateral, consequential or any other damage connected to the delivery, supply or use of this manual.

Table of Contents

I	Important Information	1
Chapter 1	Installation.	2
1.1	Introduction	2
1.2	Installation Process	3
1.2.1	G1: Preventing electrostatic discharges	5
1.2.2	G2: Checking the material	5
1.2.3	G3: Disconnecting the device	6
1.2.4	G4: Opening the device	6
1.2.5	G5: Closing the device	7
1.2.6	G6: Connecting the cables	7
1.2.7	I1: Inserting the card	7
1.2.8	I2: Positioning the card	7
1.2.9	I3: Placing the washers	8
1.2.10	I4: Removing the RF protector	8
1.2.11	I5: Installing the external RF connector	8
1.2.12	I6: Connecting the internal RF connector to the external	9
1.2.13	I7: Inserting the SIM.	9
Chapter 2	Appendix	11
2.1	Technical Specifications	11
2.2	Translated Safety Warnings	13

I Important Information



Note

The manufacturer reserves the right to make changes and improvements in the appropriate features in either software or hardware of this product, modifying the specifications of this manual without prior notice.

The images showing the front and back panels of the device are for information purposes only. Some small modification may exist in the actual device.

The equipment is intended to be installed by Service Personnel and only handled by qualified personnel. If not, the device may be damaged and malfunction.

1.2 Installation Process

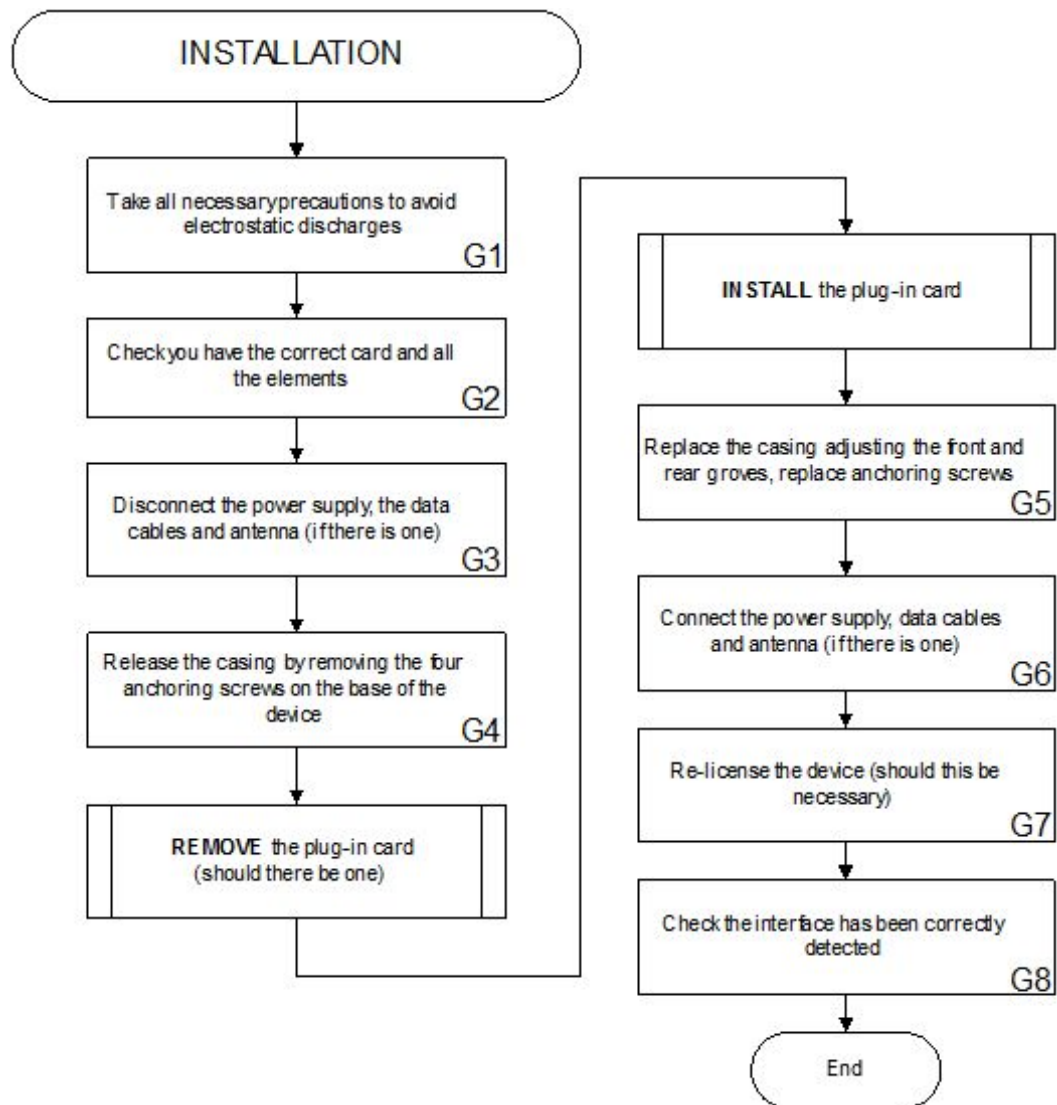


Fig. 2: General flowchart

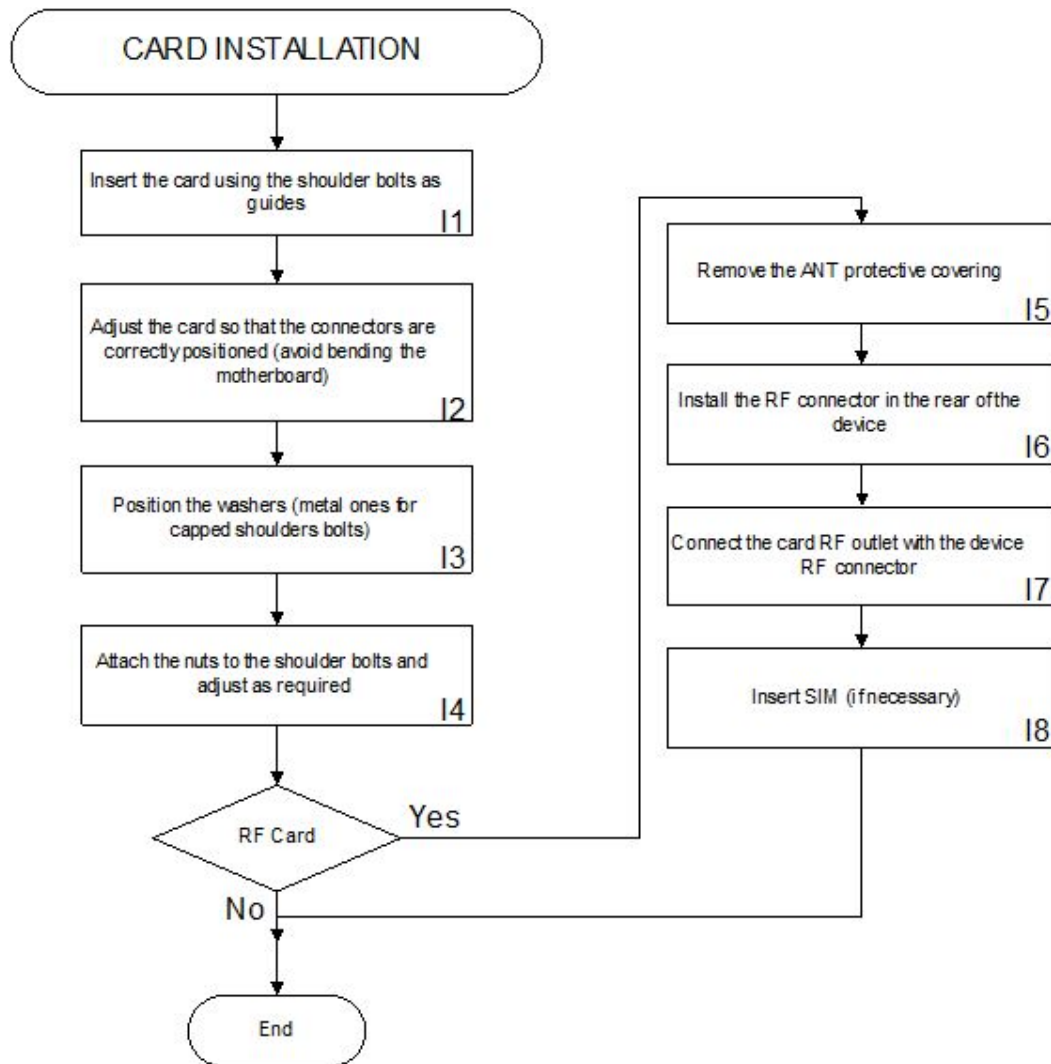


Fig. 3: Installation flowchart

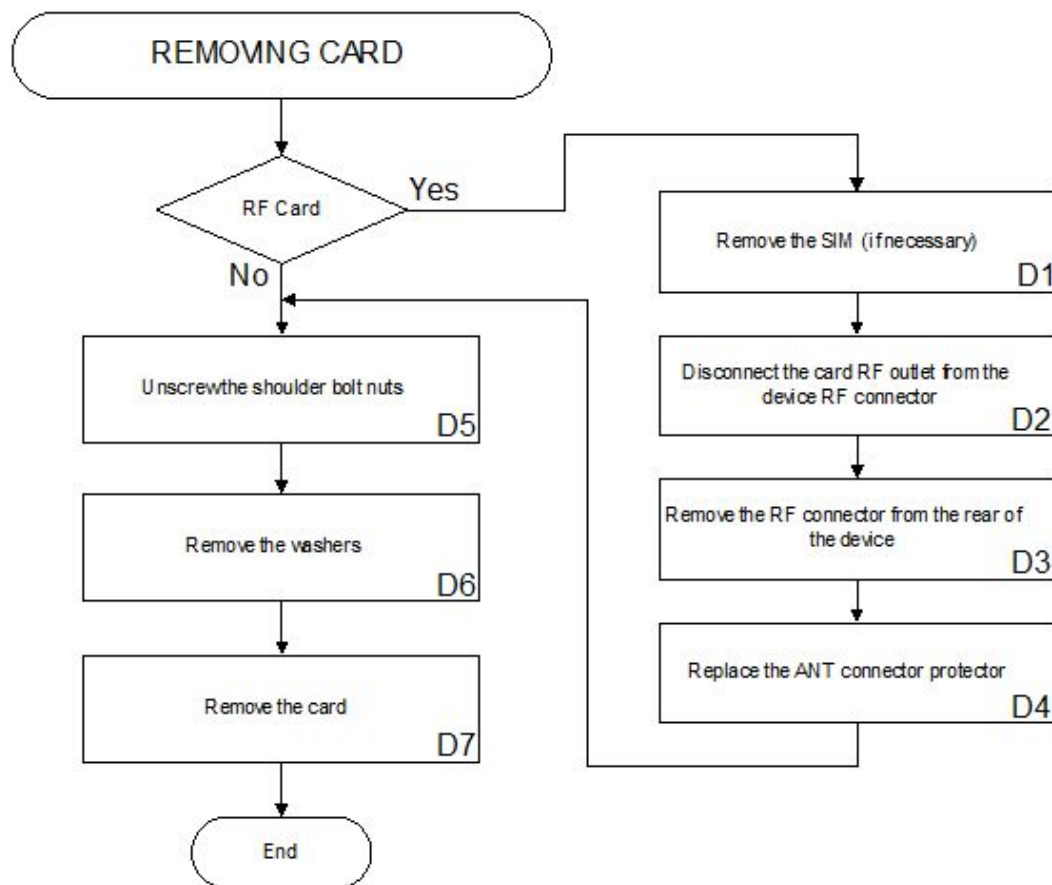


Fig. 4: Card removal flowchart

1.2.1 G1: Preventing electrostatic discharges



Warning

This device contains elements that are sensitive to electrostatic surges and shocks. Therefore, it is essential when handling the equipment that an antistatic wriststrap is connected to the device chassis and that this is placed on an antistatic mat. Furthermore, it is crucial to avoid any kind of contact between the device components and necklaces, bracelets, rings, ties, etc.

1.2.2 G2: Checking the material

Please ensure the following before opening the device:

- The items listed on the packing list and the correct plug-in card are included.
- The device allows this update (the label on the bottom of the device indicating the type of hardware should read **TM-xFxR-YYY**, i.e. Teldat Compact Modular).
- You have the necessary tools:
 - a Philips H1 screwdriver
 - S5 box spanner
 - S14 box spanner (if you are installing RF connectors)

1.2.3 G3: Disconnecting the device



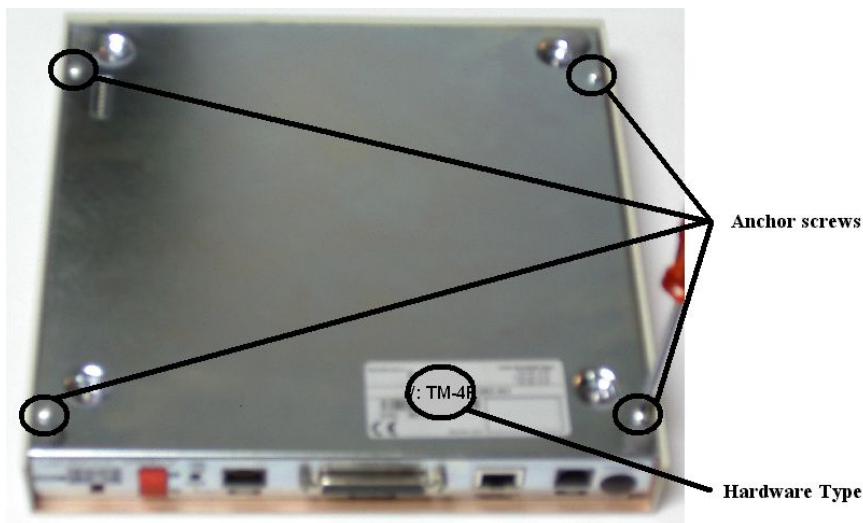
Warning

The electric current in power cables, telephone lines and communication cables is dangerous. To prevent electric shocks, before installing, handling or opening the equipment covers, connect and disconnect the cables following the steps set forth in the following tables:

To Connect	To disconnect
Make sure that the device's power On/Off switch is OFF	Switch the device's power On/Off switch to OFF
Check that the power supply is not connected to the electricity mains or to the device.	Disconnect the power supply from the electricity mains.
Connect the data cables	Disconnect the power supply to the device
Connect the power supply to the device	Disconnect the data cables
Connect the power supply to the electricity mains	
Switch the power On/Off switch to ON.	

1.2.4 G4: Opening the device

To remove the chassis from the casing, turn the device over and unscrew the four anchor screws.



1.2.5 G5: Closing the device

To close the device, place the casing over the chassis making sure that it fits correctly and carefully replace the anchor screws.

1.2.6 G6: Connecting the cables

To Connect

Make sure that the device's power On/Off switch is OFF

Check that the power supply is not connected to the electricity mains or the device

Connect the data cables

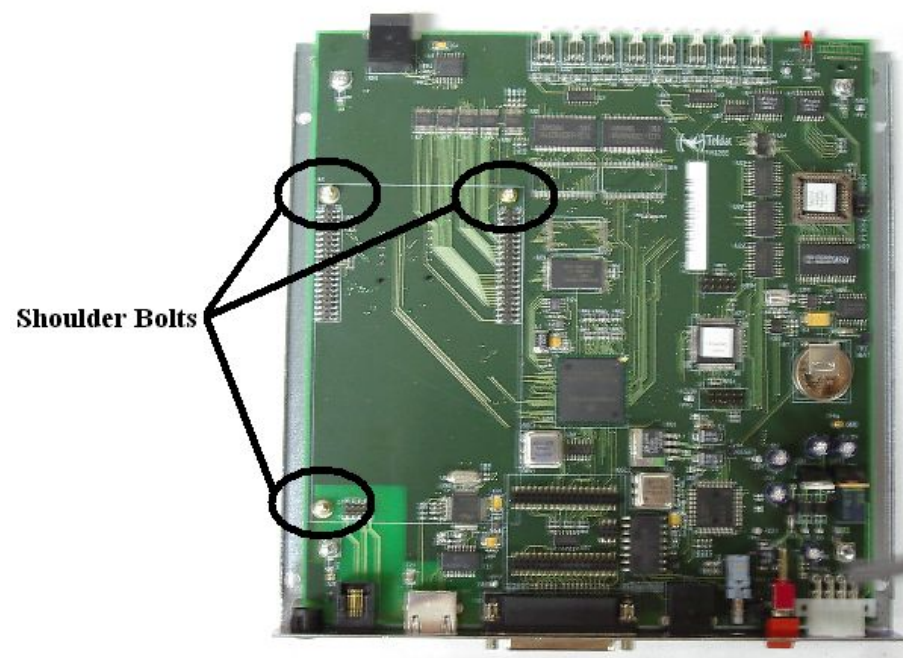
Connect the power supply to the device

Connect the power supply to the electricity mains

Switch the power On/Off switch to ON

1.2.7 I1: Inserting the card

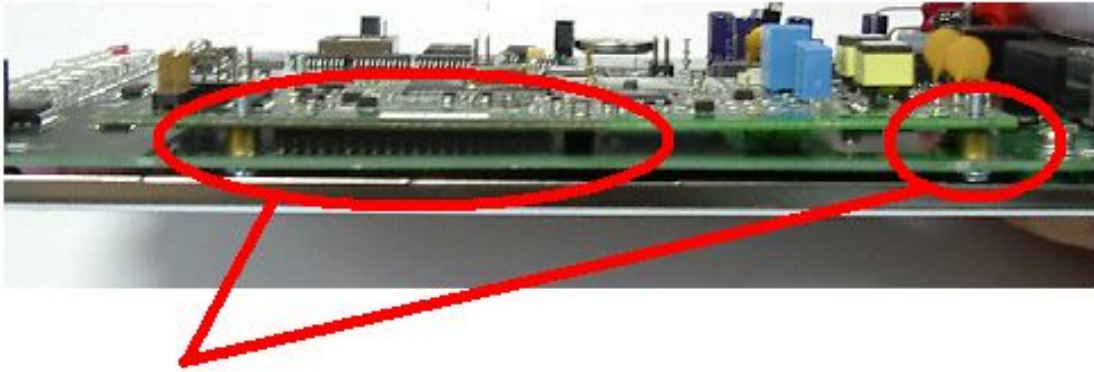
Use the three shoulder bolts as guides when inserting the card (it is impossible to insert the card incorrectly given the asymmetrical layout of the bolts and slots).



1.2.8 I2: Positioning the card

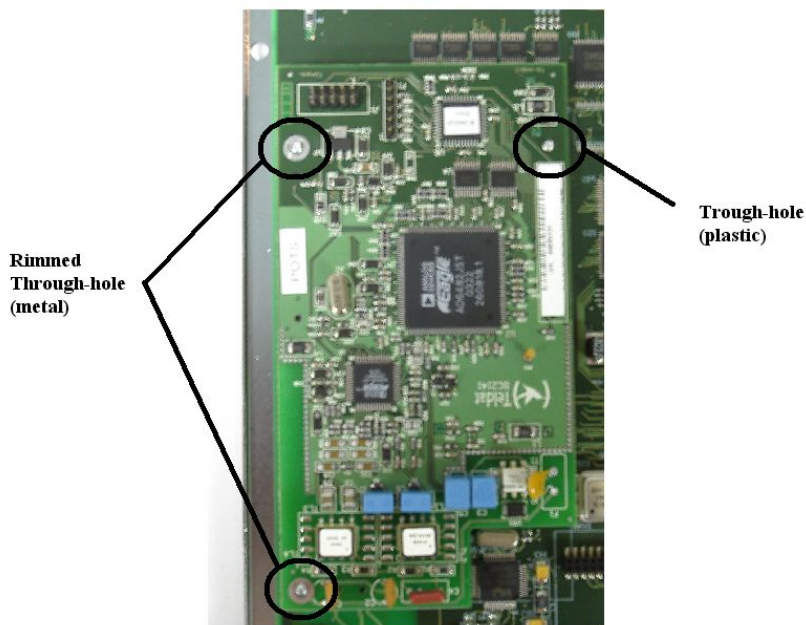
The card must sit correctly to work properly. Check the connectors (up to three) and the three shoulder bolts to make sure that the card is positioned correctly.

Do not apply pressure or bend the motherboard when positioning the card.



Correct positioning of the card

1.2.9 I3: Placing the washers

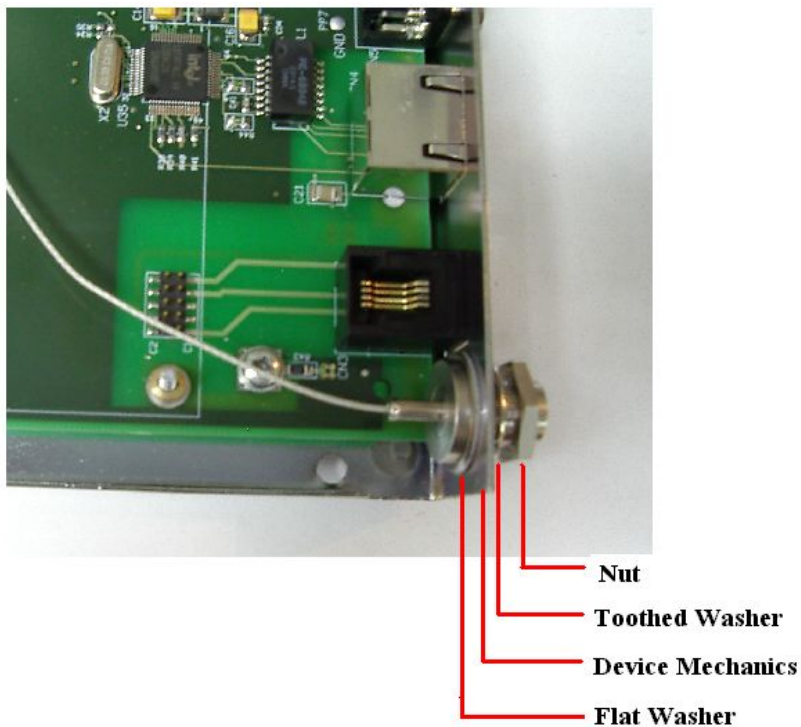


1.2.10 I4: Removing the RF protector



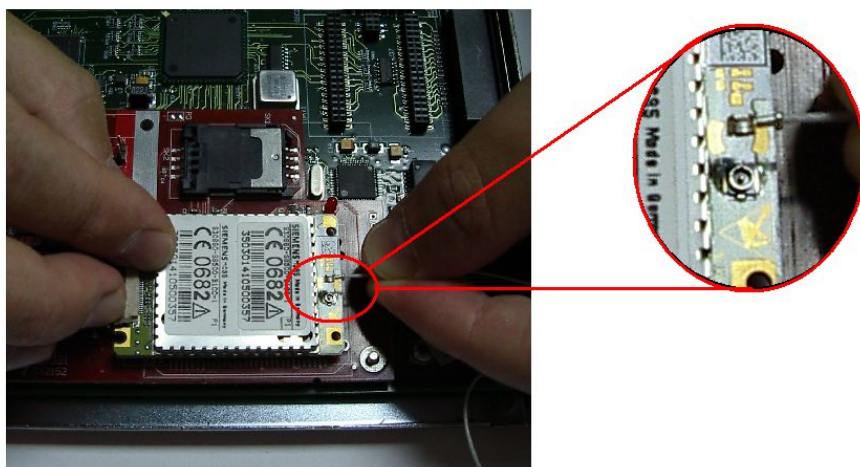
1.2.11 I5: Installing the external RF connector

The RF connector comprises four elements: a connector with a bridge wire, a flat washer, a tooth washer and a nut. To correctly install the connector attach the flat washer to the connector with the wire and then introduce this into the device mechanics. Finally, on the outside, attach the tooth washer and the nut.



1.2.12 I6: Connecting the internal RF connector to the external

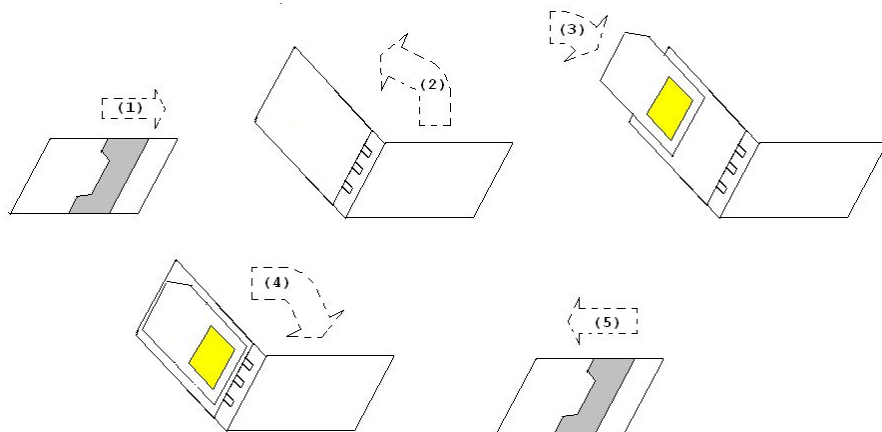
Insert (by pressing slightly) the free end of the wire coming from the external RF connector into the antenna connector on the RF module. Check to ensure it is a tight connection, since this element is critical for quality RF reception.



1.2.13 I7: Inserting the SIM

To insert the SIM card, locate the metal fastener (metal catch labeled OPEN and CLOSE). This allows you to open the card holder to insert the SIM card. The steps are:

- (1) Slide the metal fastener to the right (OPEN) until the SIM card holder is released.
- (2) Lift up the top of the holder.
- (3) Place the SIM card in the holder between the guides.
- (4) Close the top of the holder.
- (5) While pressing the holder, slide the catch to the left (CLOSE). The card should be perfectly inserted in the holder.



Chapter 2 Appendix

2.1 Technical Specifications

SH2024 Card

INTERFACE	SHDSL
CHIPSET	ZipWire™ MindSpeed
CHARACTERISTICS	G.991.2

BC2141 Card

INTERFACE	ADSL
CHIPSET	EAGLE™ Analog Devices
CHARACTERISTICS	ANSI T1.413 Issue 2 / G.992.1 (Full Rate) / G.992.2 (G. Lite)
<small>Each card is clearly identified through a label attached to the card face (POTS or ISDN)</small>	POTS: TR-48 Compliant
	ISDN: ITU Annex B compliant, DT UR-2 compliant

AC7815 Card

INTERFACE	ADSL
CHIPSET	DynaMiTe™ ST
CHARACTERISTICS	ANSI T1.413 Issue 2 / G.992.1 (Full Rate) / G.992.2 (G. Lite)
<small>A sticker attached to the front of the card clearly identifies the card type (POTS or ISDN).</small>	POTS: TR-48 Compliant
	ISDN: ITU Annex B compliant, DT UR-2 compliant

AN2005 Card

INTERFACE	ADSL2+
CHIPSET	Conexant Titanium Ultra Plus™
CHARACTERISTICS	ANSI T1.413 Issue 2 / ETSI 101 388
	G.992.1 (G.DMT) Annexes A and B
	U-R2 Deutsche Telecom
	G.992.2 (G. Lite)
	G.992.3 (ADSL2) Annexes A, B and L
	G.992.5 (ADSL2+) Annexes A, B and M

GV2152 Card

INTERFACE	GSM/GPRS
GSM/GPRS MODULE	Siemens MC35 / MC35i
	Sony Ericsson GM47/48

CHARACTERISTICS	Dual band EGSM900/GSM1800 GPRS multi-slot/mobile station class 8 GSM 2/2+ compliant
-----------------	---

XS6117 Card

INTERFACE	GSM/GPRS
GSM/GPRS MODULE	Siemens MC45
CHARACTERISTICS	Tri Band EGSM900/GSM1800/GSM1900 GPRS multi-slot/mobile station class 10 GSM 2/2+ compliant

CE6358 Card

INTERFACE	GSM/GPRS/EDGE
GSM/GPRS MODULE	Siemens MC75
CHARACTERISTICS	Quad Band EGSM850/EGSM900/GSM1800/GSM1900 EDGE multi-slot class 10 / mobile station class B GPRS multi-slot class 12 / mobile station class B GSM release 99

AA2332 Card

INTERFACE	Modem dial-up
CHARACTERISTICS	V.92, V.34, V.32 and V.22 data rate options V.44 and V.42bis data compression V.42 Error Correction

AA2332 (B) Card

INTERFACE	Modem Wireless CDMA
CHARACTERISTICS	CDMA2000 1xRTT CDMA IS-95A, IS-95B backward compatible Dual band: 800 MHz (with R-UIM) and 1900 MHz Class 2.0 Group 3 Fax SMS

HY4567 Card

INTERFACE	SHDSL (2 and 4 wires)
CHIPSET	Conexant Orion™
CHARACTERISTICS	G.991.2




Dimensions and weight

TYPE	Plug-in card
LENGTH x WIDTH x HEIGHT	15 x 7.5 x 20 mm.
WEIGHT	100 g.

Environmental Specifications

OPERATING TEMPERATURE	ON: 5° to 45°C. OFF: -20° to 60°C.
RELATIVE HUMIDITY	ON: 8% to 85%. OFF: 5% to 90%.

2.2 Translated Safety Warnings

	The equipment is intended to be installed by Service Personnel and only handled by qualified personnel. If not, the device may be damaged and malfunction.
	El equipo está diseñado para ser instalado por personal del servicio técnico y su manejo debe realizarlo personal cualificado. De lo contrario, el equipo puede resultar dañado y quedar inservible.
	This device contains elements that are sensitive to electrostatic surges and shocks. Therefore, it is essential when handling the equipment that an antistatic wriststrap is connected to the device chassis and that this is placed on an antistatic mat. Furthermore, it is crucial to avoid any kind of contact between the device components and necklaces, bracelets, rings, ties, etc.
	Este equipo contiene componentes sensibles a las sobrecargas y descargas electroestáticas. Por eso, durante la manipulación del equipo, utilice una pulsera antiestática conectada al chasis del equipo y colóquelo sobre una esterilla antiestática. Evite también el contacto de colgantes, pulseras, anillos, corbatas, etc. con cualquier componente del equipo.
	The electric current in power cables, telephone lines and communication cables is dangerous. To prevent electric shocks, before installing, handling or opening the equipment covers, connect and disconnect the cables following the steps set forth in the relevant section.
	La tensión eléctrica de los cables de alimentación, de los cables de la línea telefónica y de los cables de comunicación es peligrosa. Para evitar descargas, antes de instalar, mover o abrir las cubiertas de este equipo, conecte y desconecte los cables siguiendo el orden que se detalla en los apartados " Para conectar " y " Para desconectar ".